



inputhousingcorp@gmail.com

inputhousing.com

HOME *sweet* HOME 

**MISSION** Develop, build and manage a condominium residence for adults with intellectual disabilities, enabling them to live semi-independently, in a safe and welcoming environment; while providing life skills training, continual support and access to programs and service.

**VISION** People with intellectual disabilities will live in safety and security as valued members of society. Every person is entitled to a home that provides support while encouraging independence. Input Housing will demonstrate creativity and innovation in addressing housing for those with intellectual disabilities.

**BUSINESS PHILOSOPHY** Input Housing Corp. is a board-governed, non-profit organization. Individual ownership of the condominiums and control of the housing project/operation is key to the success of this endeavour. Protected by individual condo ownership, residents have safe housing and the power of self-determination. Residents will enjoy life-long opportunities to learn, mature and connect.







# A new kind of living

Input Housing is an intentional community: built for friends who choose to live near each other, so as to experience independent, supported living, as well as a sense of belonging.

Input Housing Corp. is a non-profit corporation which believes everyone should be able to grow up and move into a place of his/her own. Home should be a place where you feel safe. It should be secure, without the fear of ever being left homeless. For many people with intellectual disabilities, these modest dreams are out of reach.

Input Housing Corp. is building a condominium residence for ten such young adults. People with intellectual disabilities possess a range of abilities. Many desire, and have the skills, to live semi-independently. This project is intended to further encourage the development of those abilities and address those important aspirations. Simply put, doesn't everyone want a safe place they can call home? And, shouldn't everyone be able to choose with whom they live?

This low-rise, condominium building will give its residents independence, as they mature and socialize in a supportive environment. Input Housing is an intentional community: built for friends who choose to live near each other, so as to experience independent, supported living, as well as a sense of belonging. The building concept, with single, individually-owned condos, will offer tenants privacy and independence. A resident caretaker/manager will also provide additional security. Guidance and support for each resident will be provided by a contracted service provider. We are partnering with

Creative Options Regina (COR) in anticipation that they will provide us with their services.

Input Housing Corp., as a non-profit corporation, will develop the condominium, working with an experienced builder. Input Housing Corp. will then sell, rather than rent, the individual condo units to the families of adults with intellectual disabilities. Input Housing Corp. will continue to oversee the operation of the building and the on-site building manager, in conjunction with the condominium board. Input Housing Corp. is operated completely by volunteers. It's hoped Input Housing will become a model for similar, future housing developments.

Input Housing is, literally, a dream under construction, utilizing the talents of Regina's finest in the design and construction sector. The building has been designed by SEPW Architecture. Construction is planned for 2019. Input Housing's condo residence will be located in Harbour Landing, in Regina. This ideal location is in close proximity to public transportation, major shopping areas, entertainment, restaurants, coffee shops, pharmacies, parks, playing fields, and a bicycle/walking path system.

As in any other condo complex, each condominium will be a complete, private living

space with its own kitchen, living room, bedroom, bathroom and in-suite laundry. The condos vary in size from approximately 725 sq. ft. (one-bedroom) to approximately 1000 sq. ft. (two-bedroom). The building also provides a large, shared amenity space, on the main level, which includes a large kitchen, dining area, laundry, social room and activity area. A two-bedroom suite on the main floor will be home

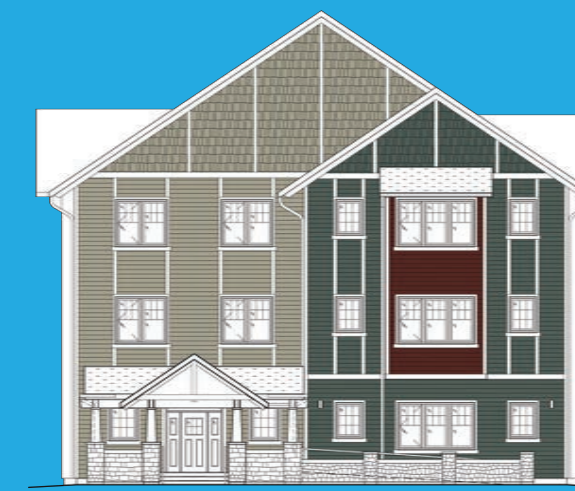
WELCOME TO THE WORLD OF INPUT HOUSING:  
*a place where dreams come true.*

to an individual or couple who would be responsible for general maintenance and supervision. An office area, with access to a bathroom, will be available for outside staff from our contracted service provider, Creative Options Regina, which will provide individualized guidance and support for each resident.

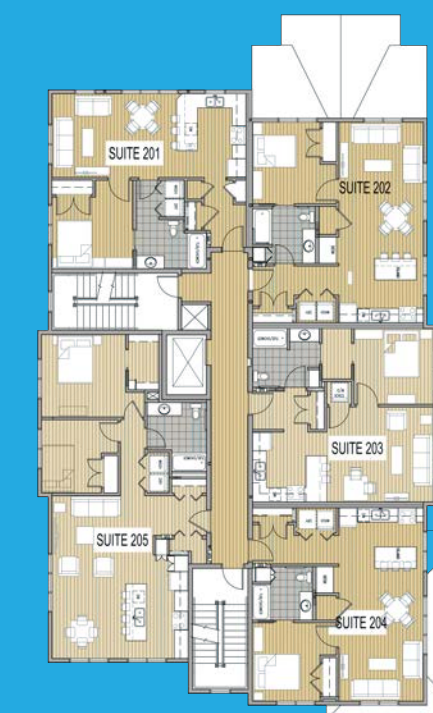
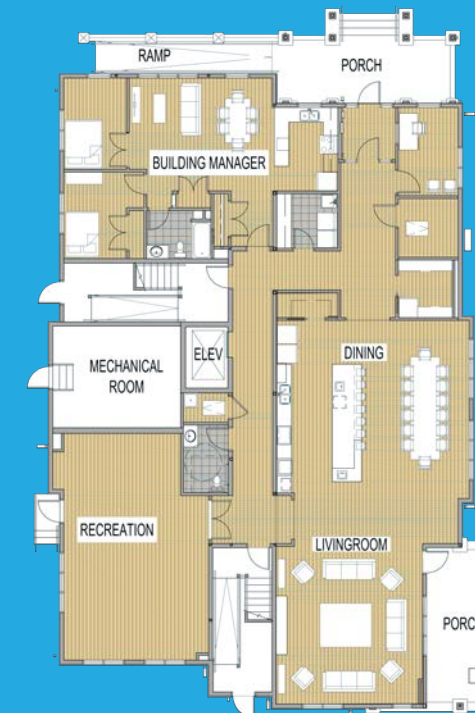
The newly-constructed building will be wheelchair-accessible with elevator and security access. The building design provides an up to date security system, individual monitoring, sprinkler system, motion controlled outdoor lighting and parking.

This unique project is led by the families of young adults with intellectual disabilities and seeks to create home and self-determination for people who might otherwise be at risk of being homeless. Typically, as family supports age and disappear, those with intellectual disabilities become more vulnerable and more dependent on government assistance. Input Housing addresses this risk by establishing secure, individually-owned condos. This concept also provides resident/owners the opportunity to become more independent, confident and fully engaged in the larger community.

We believe Input Housing offers an exciting future for ten young adults with intellectual disabilities: independence, support, choices, safety, freedom, community, and ownership. We thank you for your interest! ❤️



# HOME *sweet* HOME



INNOVATIVE

TRANSFORMATIONAL

SUPPORTIVE

INDEPENDENT